

OUR PHILOSOPHY

Perfection

The perfect solution for the aesthetic and functional needs of your facility



Performance

Give our athletes of today the performance they want



Safety

Give our athletes of tomorrow the safety they need



Gerflor

43, Boulevard Garibaldi - 69170 Tarare
Tel: +33 4 74 05 40 00
Fax: +33 4 74 05 04 60
e-mail: contactsport@gerflor.com

www.gerflor.com





Taraflex® Tennis



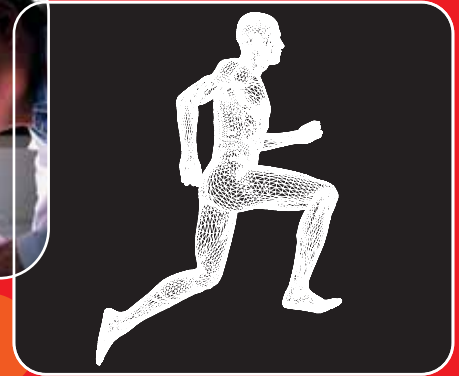
"We are extremely pleased with our partnership with Gerflor.

Taraflex® has a long and proven history at ATP Tournaments, and we have cooperated for many years to offer the best possible playing conditions, not only for ATP players, but for all club players.

Taraflex® tennis surfaces provide an ideal combination of comfort, shock absorption and high performance, allowing players to perform at their best while preserving their physical condition."

*Richard Davies
CEO, ATP Properties*

Innovation Technology



Exclusive Partnership With the ATP !

- 59 years of experience in producing sports flooring
- Over 55,000 sports flooring installations worldwide
- Recipient of ISO 9001 and ISO 14001 certification
- Complies with all sports flooring standards worldwide, i.e. NFP90-203, DIN 18032-2
- Guaranteed safety with better shock absorption than other vinyl flooring
- Approved by ITF, WTA and ATP for official competitions



The ATP Exclusive Partnership Certificate

Starting in January 2005, the ATP has selected in exclusivity the Gerflor tennis court surfaces as the Official Surface of the ATP and the Official Surface of the Tennis Masters Cup.



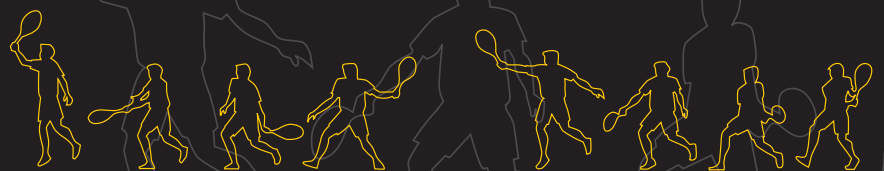
Taraflex® Tennis

Engineered flooring

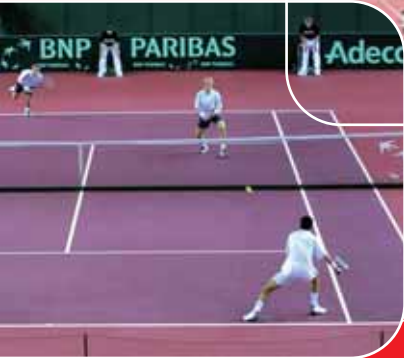
As The Manufacturer Of Taraflex® Sports Flooring

Gerflor Is The World Leader In Indoor Resilient Sports Flooring

Here's the proof ! 300 million square feet of Taraflex® Sports Flooring installed worldwide



Gerflor - The Best Tennis Exclusive



Taraflex® Tennis

ATP/ITF Competitions

- 2006 Davis Cup / Zagreb CROATIA
- 2006 Davis Cup / Pau FRANCE
- 2005 Tennis Masters Cup / Shanghai CHINA
- 2004 – 2005 St. Petersburg Open / St. Petersburg RUSSIA
- 2002 – 2005 Challenger / Andrezieux FRANCE
- 1991 – 2005 BNP Paribas Masters / Paris FRANCE
- 1987 – 2005 Grand Prix Tennis de Lyon / Lyon FRANCE
- 2001 – 2005 Kremlin Cup / Moscow RUSSIA
- 2004 Davis Cup / Ostrava CZECH REPUBLIC
- 2004 Davis Cup / Minsk BELARUS
- 2003 Davis Cup / Calgary CANADA
- 2003 Davis Cup / Sofia BULGARIA
- 2003 Davis Cup / Bucarest ROMANIA
- 2002 Davis Cup / CZECH REPUBLIC
- 2002 Davis Cup / Pau FRANCE
- 2002 Davis Cup / Rennes FRANCE
- 2002 Davis Cup / RUSSIA
- 2002 Davis Cup / Constata ROMANIA
- 2002 Davis Cup / Birmingham U.K.
- 1999 Davis Cup / SWEDEN
- 1999 Davis Cup / Pau FRANCE
- 1997 – 2002 Davidoff Swiss Indoors Open / Basel SWITZERLAND
- 1995 – 1997 Eurocard Open / Stuttgart GERMANY



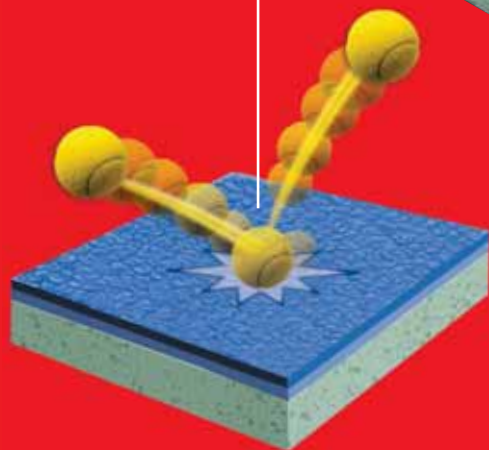
Taraflex® Tennis

Courts!

Partnership with the ATP!



Taraflex®'s superior indoor tennis surfaces you ideal playing conditions



Medium ball speed

SPORTS CHARACTERISTICS

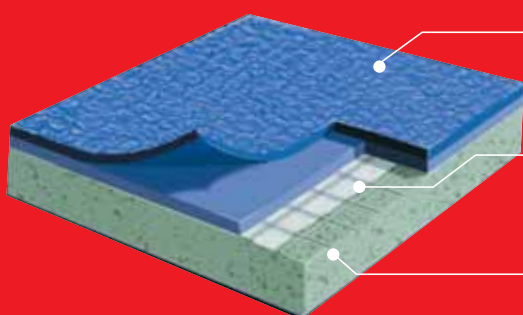
- Ideal surface for any player: from young beginners to seasoned professionals and senior players
- Medium ball speed
- Incredible surface comfort with regular and consistent ball rebounds
- The safest tennis surface: a guarantee against pain or injuries
- Attractive color choices

DURABILITY

- Excellent abrasion resistance compared to resins / hard courts
- Outstanding return on investment
- ISO 9001 and ISO 14001 guarantees of quality

INSTALLATION AND MAINTENANCE

- Can be installed as portable or permanent surface
- Reduced cost of maintenance: water and detergent

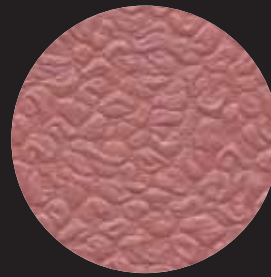


- 1** Precise texture for medium ball speed and accurate ball bounce and spin
- 2** Fiberglass to reinforce dimensional stability and for better foothold
- 3** Closed-cell foam backing = comfort, energy return and shock absorption to reduce risk of injuries

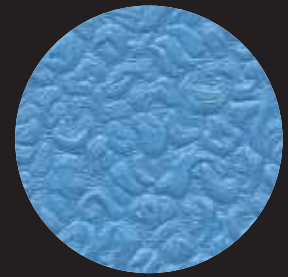


give and comfort.

Technical Data	Industry Standard	Taraflex® Tennis
Total Thickness	EN 428	6.2 mm
Weight	EN 430	4.2 kg/sqm
Length of Roll	EN 426	24 m
Width of Roll	EN 426	1.5 m
Shock Absorption	DIN 18032	≥ 30 %
Sliding Coefficient	DIN 18032	0.4 - 0.6
Ball Speed (Pace)	ITF	2/Medium
Abrasion Resistance	EN ISO 5470-1	≤ 300 mg
Light Reflection	ISO 2813	< 12
Chemical Resistance	EN 423 ASTM/D543	Excellent



6118 PARIS



6471 MELBOURNE



6473 NEW YORK



6504 LONDON

See for yourself what our customers say...

// The students have commented that the floor makes their running a lot easier and less stressful. Taraflex® is a great looking floor and everyone seems to really like it. //

St John Fisher College, New York

// On Gerflor Taraflex®, every kind of tennis can be played, from the serve and volley game of Tim Henman, winner of the tournament in 2003, to the baseline attacks of Agassi or Safin! The expression of every tennis style is provided for by this flooring, which accurately translates every effect that a player can give to the ball. In terms of quality and comfort, this soft surface ensures that the athlete is safe. On this surface, there is no interference in players' freedom of movement. Their joints are protected and the risks of injury are fewer. At the end of the season, this is a vital factor. //

Stéphane Simian, Tournament Director, BNP Paribas Masters Series Paris Bercy

// I can confirm that Taraflex® Tennis, the ATP court, performed to the highest level. //

Gavin Fletcher, National Events Manager
The Lawn Tennis Association, Britain, Davis Cup by NEC

// Gerflor Taraflex® Tennis not only enables players to perform at their best, but also contributes to the overall "look" of the facility. Ball pace and bounce are perfect, and it's really easy to maintain. I would recommend this world class product to any Tennis Club! //

C. Chatelard, President, Tennis Club Miribel, France

// Taraflex® really rejuvenated the whole facility. We had a lot of problems with shin splints before installing Taraflex®. Thanks to its shock absorption, athletes can have three hour practices and we get more use out of the facility. //

Cleveland State University, Ohio

